



**fRI** *Research*  
informing land and resource management



**NSERC  
CRSNG**

# Grizzly-PAW: Grizzly Population Assessment in yellowWhead: Integrated Approaches Toward Conserving Grizzly Bears On A Human-Dominated Landscape Of Western Alberta.

Annual General Meeting

Gordon Stenhouse

Calgary, October 18, 2019





- We have traditionally thought that human use and activities cannot take place on the same landscape occupied by grizzly bears.
- We have data that suggests we need to rethink this assumption, if we can address human caused mortality issues.



## BMA 3 Population Estimates

2004:  **$N=36$**  (CI=27-45)

Ten years later.....

2014:  **$N=74$**  (CI=56-98)

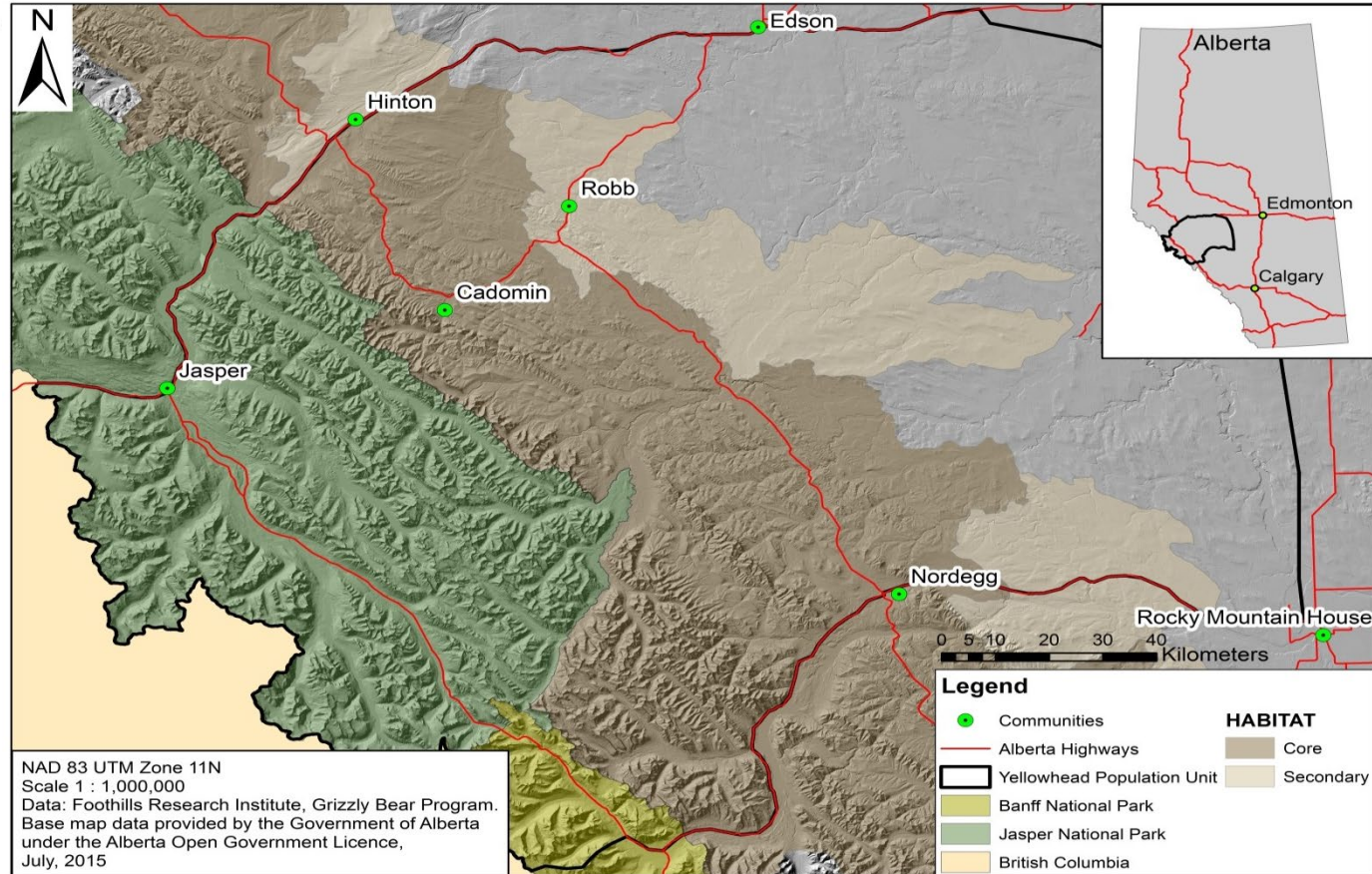
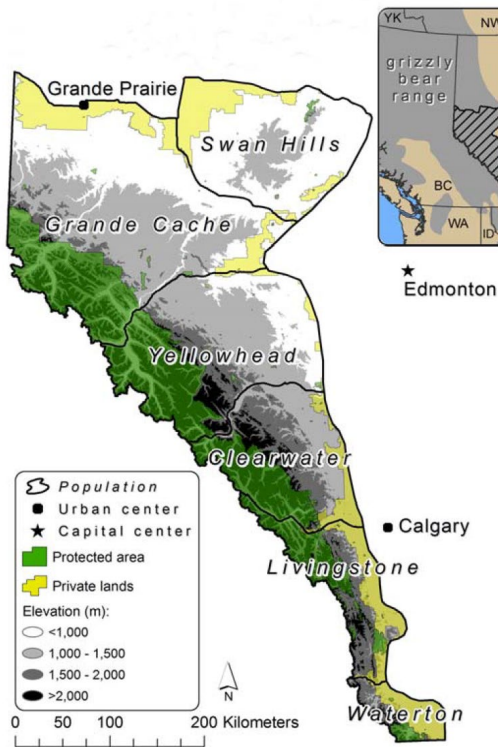
Population estimate doubled. Annual growth rate of 7%.

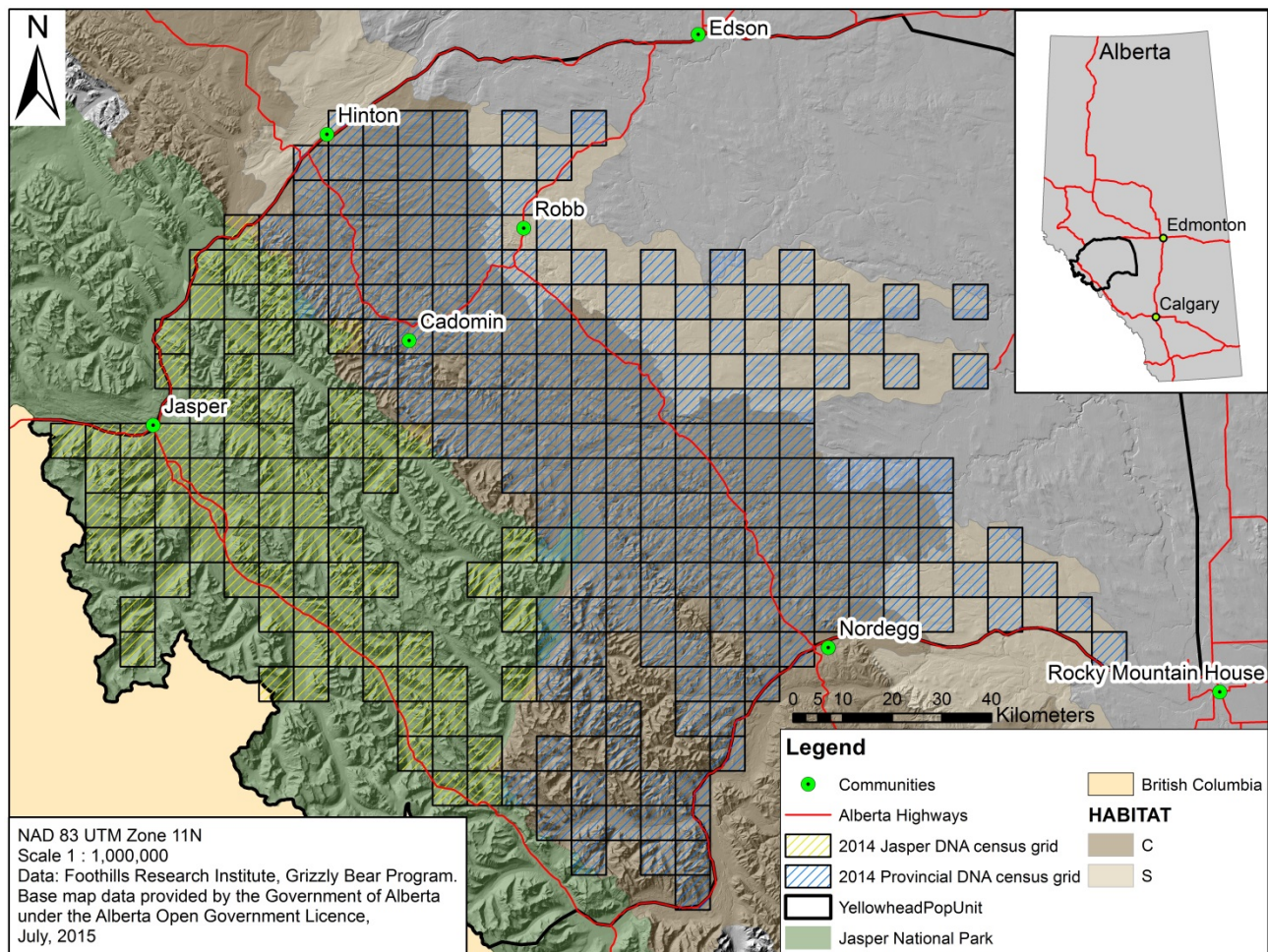




# Study Area – BMA 3

## Why?





Changes over 10+ years:

- Weyerhaeuser, West Fraser, AEP and Parks Canada – inventory
- Recognition of the need to include Jasper National Park
- SECR designs – reduced cost of inventory

# rizzly bear database –

EVENTS

Captures

Conflicts

Census

Mortalities

Opportunistic

Relocations

Tracking

Collar  
Uploads

EVENTS

Bears

GPS Collar  
Locations

External  
Geodatabase

FIELD DATA

Reproductive

Body  
Measurements

Tags &  
Telemetry

Event  
Locations

Biological  
Samples

Photos

Health

Genetics



# Good News!



- Increasing populations are important for provincial recovery and for sustainable resource management
- But.....

Unfortunately two points do not allow us to determine trend, and we need to better understand how these populations have responded to ongoing natural resource management in this BMA.





# fRI Role in NSERC/CRD



## Bringing Key Players Together to achieve a Common Goal

- Industry partners
- Academic researchers and bright graduate students
- Engaging with government managers on progress and results of applied research for conservation and recovery
- Capture and collaring of research bears (data for research team use)





Questions?

